

OsteoCare

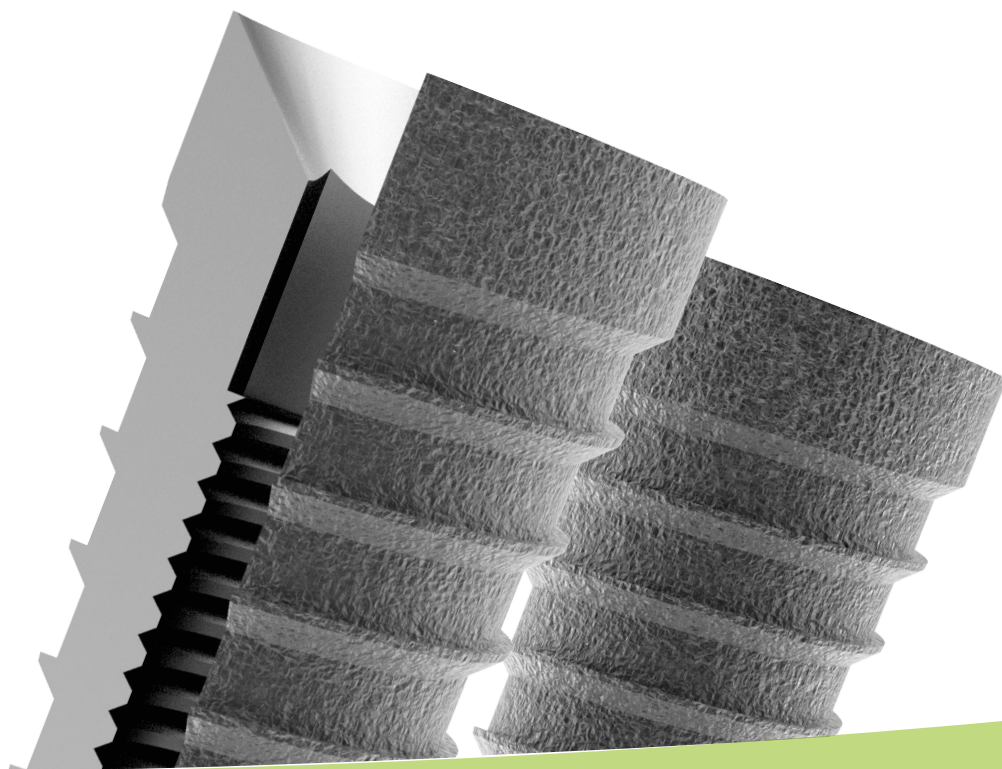
Dental Implant Solutions




Growing Our Community in The Pursuit of Excellence

Product Catalogue

www.osteocare.uk.com



Issue 8/2023



OsteoCare Implant System
5-7 Colndale Road, Poyle Ind. Estate,
Colnbrook, Slough,
Berkshire SL3 0HQ,
United Kingdom.

Tel: +44(0)1753 770006
Fax: +44(0)1753 770005
Freephone: 0800 281981
E-mail: info@osteocare.uk.com
Website: www.osteocare.uk.com

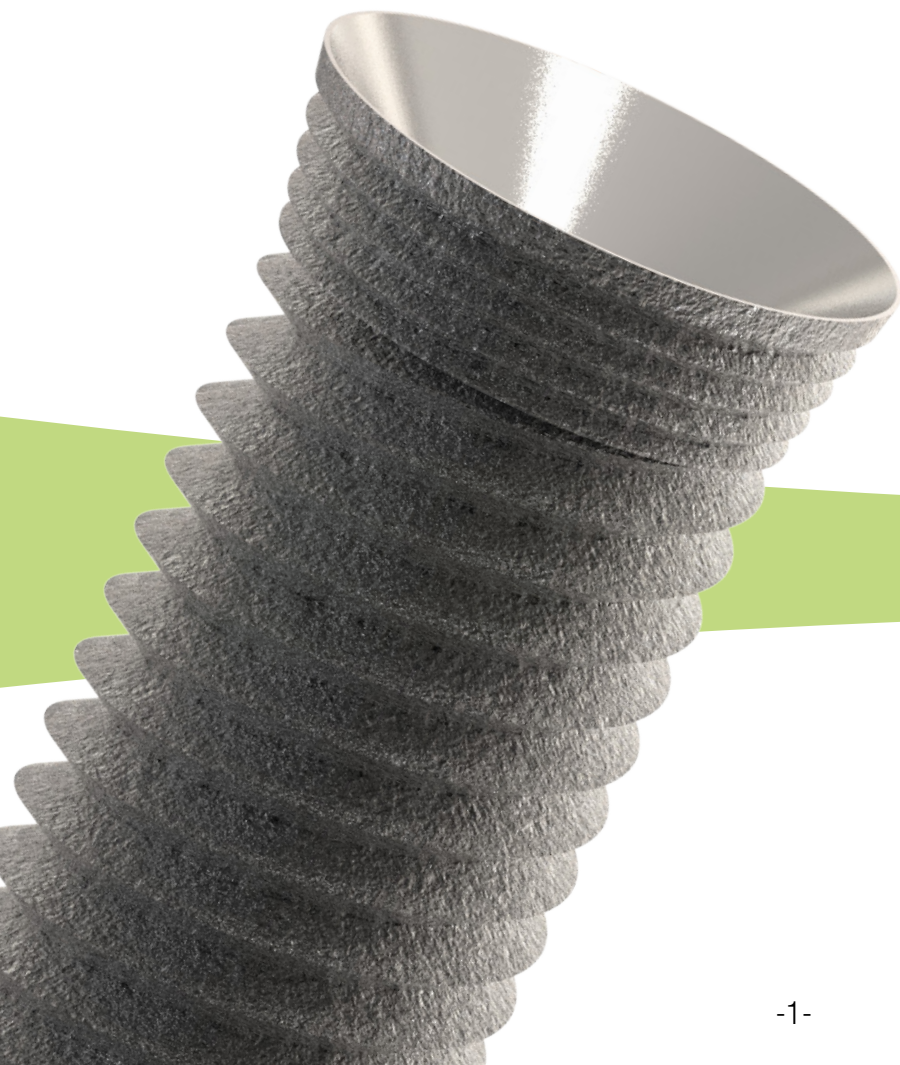
Table of Contents

Company Overview	page 1
Maxi Z & Maxi Z Plus	page 3
Maxi Z Flat-End & Maxi Z Flat-End Plus	page 4
Mini/Midi Ball Type	page 5
Mini/Midi Post Type	page 6
Maxi Z One-Piece	page 7
Advanced & Classic Advanced	page 8
Prosthetics	page 9
Universal Kit	page 11
Digital Options	page 12
Centre Finder, Ball Driver and Ultra Drills	page 13
Equator Overdenture System	page 14
Product List	page 15

Important Notice:

Completion of an appropriate training course is strongly advised, prior to placing OsteoCare Implants. Thus complying with the GDC guidelines.

100% British
Scientifically Engineered



Company Overview

OsteoCare, one of the only British designed and manufactured dental implant systems, stays true to the pure science behind its implants. With Research & Development at the heart of OsteoCare the introduction of new or modified products is based on proven scientific and clinical benefit rather than marketing trends. In maintaining its core implant connection, users of the system are assured that all past and future products will be compatible.

Being a family run business with a long history in the dental industry, OsteoCare is big enough to respond to implant innovation but small enough to value its personalised customer relationships – proven through a successful track record and excellent feedback.

OsteoCare endeavours to make implants accessible and affordable for both clinicians and patients alike by producing a simple, cost-effective, easy to use system, providing amazing aesthetic results – with OsteoCare **“You really can have it all”**

Our Superior Quality...

OsteoCare products are designed, manufactured and inspected under a quality management system that conforms to ISO and EN requirements and are CE certified.

All implantable devices adhere to stringent EU Medical Device Regulations, an example of which is the use of implantable-grade raw materials. These materials are supplied from approved sources with each individual batch of raw material subjected to rigorous testing and certification to validate compliance with all prevailing international standards.

We pride ourselves on the level of our customer care and the quality of our products, offering a lifetime warranty on all implants.

OsteoCare
Warranty

Implant
Lifetime
Warranty*

Guaranteed Quality

*Terms & Conditions Apply

Maxi Z & Maxi Z Plus

Platform design

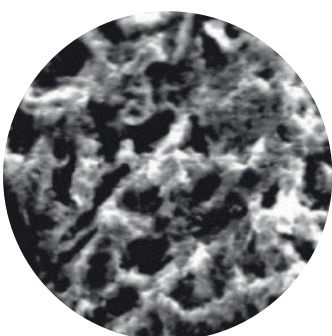
Gives better aesthetic emergence profile, especially in the anterior aesthetic zone.

Crestal Module Design

Minimal marginal bone resorption due to the protective platform that decreases the overloading of the crestal bone.

Tapered design

Allows for immediate placement in extraction sockets as well as atrophic ridges.



Grit Blasted & Acid Etched (GBA) Surface

Grit-blasting produces a defined macro-roughness surface and etching with mineral acid, which increases the micro-roughness surface. GBA enhances osseointegration and provides a 240% greater surface area than a traditional machined surface. All OsteoCare implants have a GBA surface.

Maxi Z Flat-End & Maxi Z Flat-End Plus

Internal Hex Connection

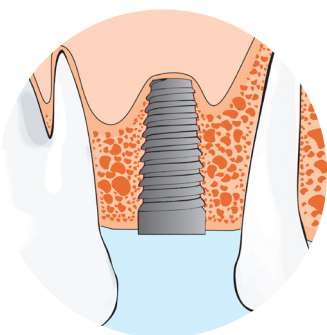
Precise fixation of abutments with a wide variety of prosthetic options.

Perfect design

Design allows for sinus floor augmentation in cases of vertical bone loss.

Flat End

Eliminates perforation of the Schneiderian membrane.



Internal Sinus Lift

Flat end and tapered designs allow for the procedure of sinus lifting without perforating the Schneiderian membrane. Lengths starting at 6.5 mm – this implant can be placed in atrophic jaws with vertical bone resorption.

Mini/Midi Ball

Integrated Ball Abutment

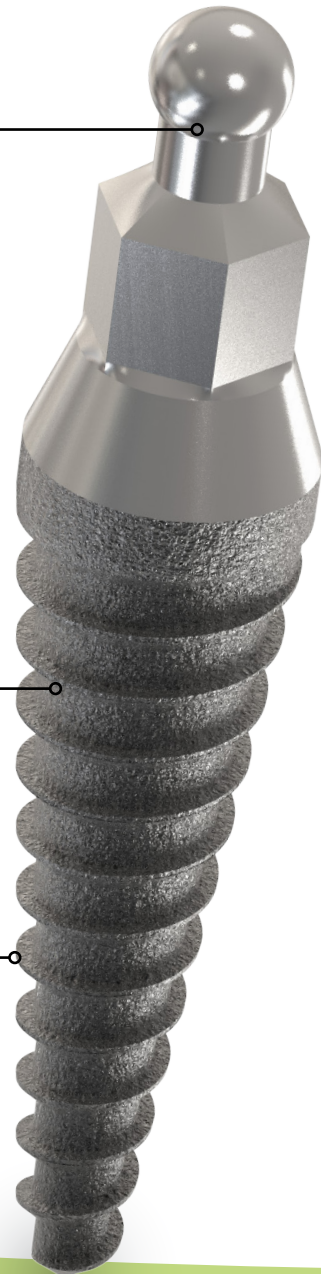
Cost-effective, stable solution for overdentures.

Conical Shape

Perfect in cases of severe atrophic ridges and helps with bone condensation and expansion.

Buttress Thread

Allows for maximum stability in all bone types.



Polycarbonate 'O' Ring Housings

Polycarbonate 'O' Ring Housings have two features that makes them unique in design and application. They integrate well with the denture, so the grain boundary within the denture remains intact. They block out the colour of the black 'O' ring so it will not show through into the denture- a problem that is common when using metal housings.

Mini/Midi Post

Integrated Abutment

Eliminates screw loosening and is a cost-effective solution.

One Piece Design

Diameters starting at 2.35mm.

Tapered Design

Allows for placement in narrow atrophic ridges without the need for bone augmentation.



One Drill Placement

Mini & Midi Implants may be placed in a single-stage transgingival procedure. Implant placement surgery usually involves only minor preparation of the bone (osteotomy) using a pilot drill and seating of the implant within the osteotomy. This is a less invasive treatment option.

Maxi Z One-Piece

Integrated Abutment

Allows for same day preparation for the abutment and temporary crown.

One Piece Design

Allows for immediate loading in healed bony sites as well as immediate post extraction sockets.

Buttress Thread

For strong fixation with high initial stability in all bone qualities.



“No Touch” Technique

OsteoCare’s carrier system enables storage without contact between the implant and vial known as the “No Touch” technique. No contact when transporting the implant to the osteotomy ensures the avoidance of possible contaminants.

Advanced & Classic Advanced

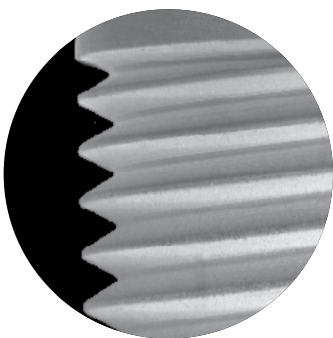
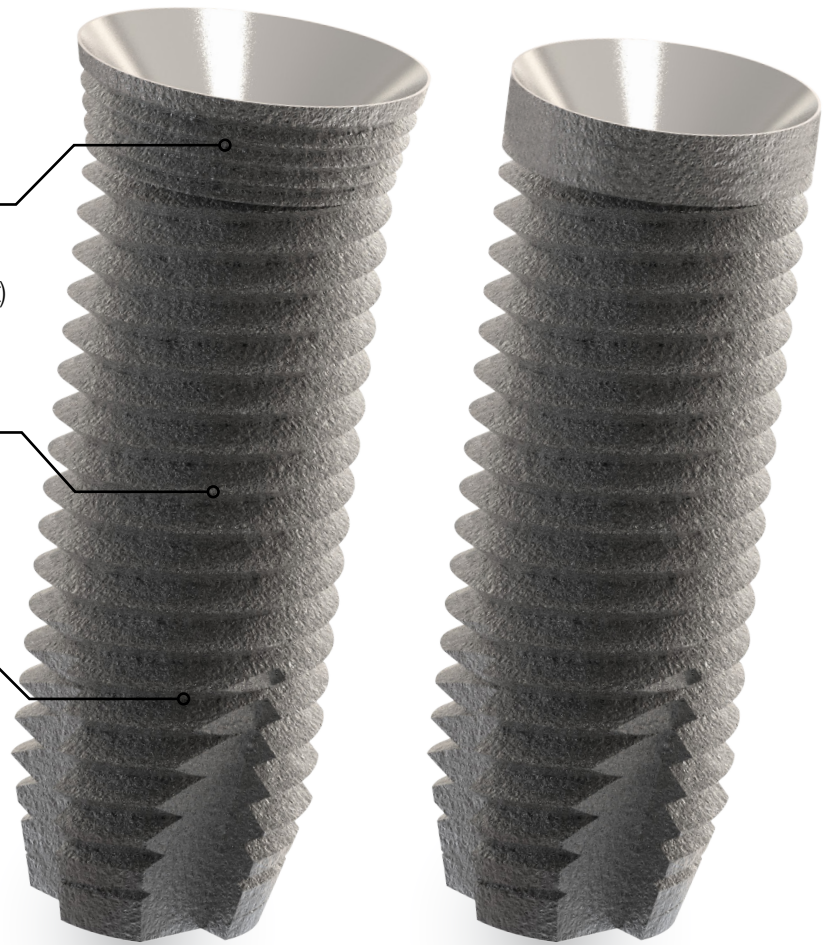
Flared Head & Micro Grooves

Allows for optimal emergence profile & improving bone resorption. (Advanced) Implant

Conventional Implant Design

Parallel walled.

Self-tapping V shaped thread with reliefs that reduce mechanical load on the implant and advantageous to surrounding bone.



Twin Start Thread

The advantages of the twin start thread are that the implants may be placed in poor quality bone, which radically enhances primary stability, and for type II or type III bone the opportunity for immediate or early load is maximised. Twin start thread allows for swift placement.

Prosthetics

A Wide Range of Versatile Options



Implant Replica



Ball Implant Replica



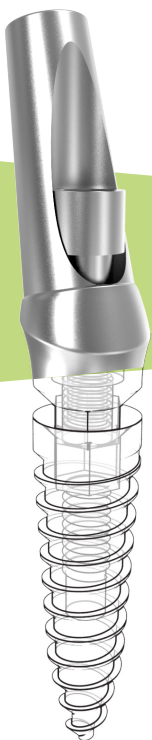
Impression Transfer
Closed & Open-Tray



Healing Collar

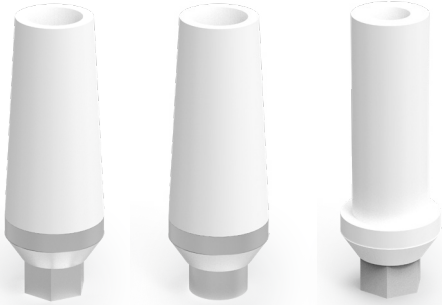


Screw-Retained Abutment

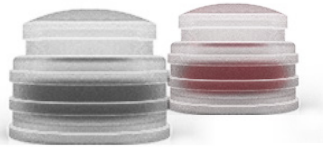


Internal Hex Connection

The OsteoCare internal hex connection system was created by a team of top clinicians and precision engineers. The internal hex connection allows better fixation of prosthetic components and an even distribution of masticatory forces with micro-movements reduced to a minimum level. The OsteoCare internal hex distributes forces deep within the implant, shielding the retention screw from excessive loading.



Direct Cast Abutments



Polycarbonate 'O' Ring
Housing



Angled Screw
Retained Abutment



Screw Retained
Ball Abutment

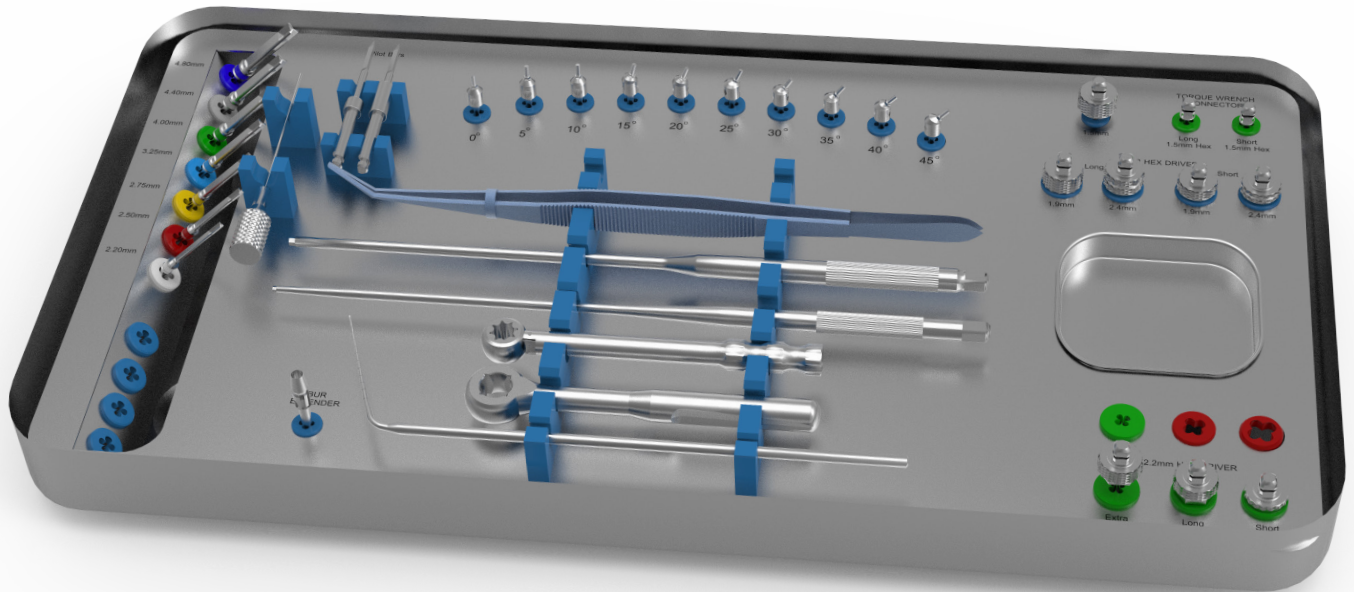


One-Piece Retained
Ball Abutment

"One of the best implant companies we have ever worked with, from the quality of the machined parts to the excellent customer service and support."

Peter Harling DTG, K2 Ceramics

Universal Kit



"The system is extremely reliable and simple allowing for not just basic but also advanced implant treatments. I have placed hundreds of Osteocare implants and have been extremely satisfied with the performance of every single component that the system provides."

Dr Martin Attariani, D.D.S

OsteoCare has purposefully designed a kit with ease of use in mind. The universal kit comprises of all the instruments needed to place and restore the full range of OsteoCare Implants, providing the clinician with the facility to perform a broad range of treatment procedures.



Trial Abutments

Trial Abutments are made from titanium alloy and are used to determine the correct abutment angulation in the two-piece implants. Use of trial abutments ensures that a restorative option is available that fits within the intended prosthetic boundary at first-stage surgery. Available from 0°-45° in 5° increments.

Digital Elements

Plan your digital impressions

The Dynamic Tibase ® is made from grade V titanium with a gold anodized coating to improve the work's aesthetic. They are to be used with Cad-Cam structures made of Zirconium, metal and PMMA, in order to provide solutions to the individual or multiple prosthesis. The Dynamic Tibase ® is designed to work with the 3.0 Dynamic Abutment ® system screwdriver and allows for correction of screw entry from 0° to 45°. The Dynamic Tibase ® come in diameters of 3.75mm, 4.50mm & 5.50mm with engaging or non engaging options. Digital libraries are available for 3shape, Dental Wings and Exocad.



Ti Base



Scan Body



Digital Analog



Dynamic Screwdriver

Restoration Software



www.dentalwings.com



www.3shape.com



www.exocad.com

Comprehensive Treatment Planning

Dental planning software provides the clinician with accurate and predictable surgery options. It enables the clinician to assess the patient's anatomy and see exactly how it relates to the proposed restoration. The treatment plan can be communicated to colleagues, the dental lab and the patient who will all see exactly what the plan entails. More and more dentists are using digital elements to restore and ultimately it makes becomes a solution that is more effective, reliable and easy to plan.

Planning Software



www.vatechglobal.com



www.planmecca.com



www.dentsplysirona.com

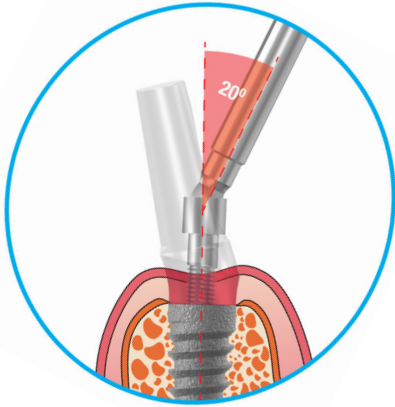
Centre Finder

The OsteoCare Centre Finder is a simple unique tool that helps dentists to mark the position for osteotomy preparation in bounded areas by using a tissue marker or scalpel. This unique tool allows you to simply find and mark the central osteotomy preparation site. It can also determine the diameter of implant you require for your gap.



Ratchet Connected Ball Driver

Angle Ball Driver- Allows for correction of up to 20 degrees which will convert a lot of cases from cement retained to screw retained.



Ultra Drills



- Superior Accuracy for Position, Angle & Depth
- High Drilling Efficiency for all bone Types
- Triple edged for Greater Stability
- Ideal for Tapered Implants
- One Stage Drilling

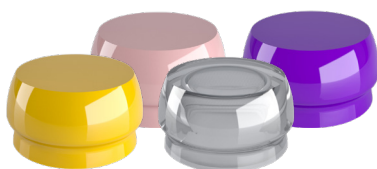
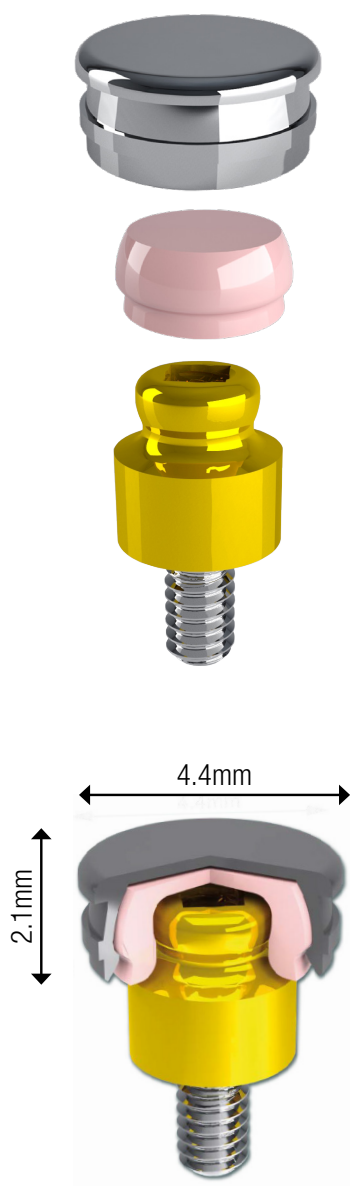
Equator Overdenture System

OT Equator

Rhein83 introduces OT Equator, the newest line of low profile direct implant overdenture attachments. With a low vertical profile of 2.1 mm and diameter of 4.4 mm OT Equator is the smallest attachment system on the market.

This system offers multiple solutions for overdenture treatment planning when vertical space limitations are a consideration. Available in two cuff heights 3mm & 5mm. Female caps are retained by means of a stainless steel housing ranging in four levels of retention, making it easy to process at the dental laboratory or chairside in the dental practice.

A complete line of OT Equator accessories and tools are also available.



Caps



Impression Transfer



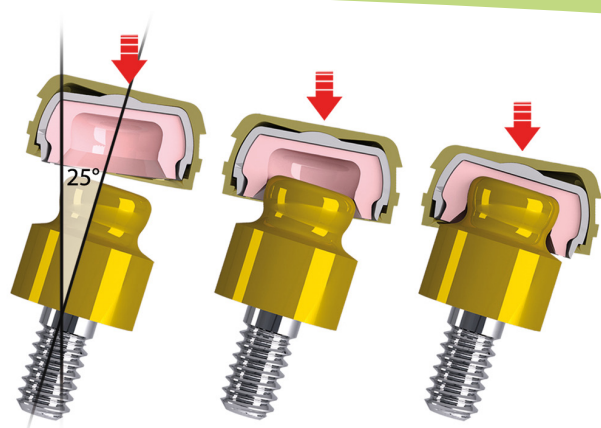
Laboratory Analogue



Black Laboratory Cap



Protective Disc



Smart Box

The new Smart Box is a retentive cap housing with an innovative design.

Thanks to a pivoting mechanism with a rotational core, it allows a passive insertion under extreme conditions, also up to 50° divergency.

Product List

Mini/Midi Implants – Post Type

One-Piece Implant for cases where immediate loading is indicated.

Implant	Length		
	10mm	13mm	16mm
Ø 2.35mm	IM-MNP235-100	IM-MNP235-130	-
Ø 2.80mm	IM-MNP280-100	IM-MNP280-130	-
Ø 3.30mm	IM-MNP330-100	IM-MNP330-130	IM-MNP330-160
Ø 3.80mm	IM-MNP380-100	IM-MNP380-130	IM-MNP380-160
Ø 4.30mm	IM-MNP430-100	IM-MNP430-130	IM-MNP430-160



Mini/Midi Implants – Ball Type

One-Piece implant with a ball for retaining dentures in Maxilla & Mandible.

Implant	Length		
	10mm	13mm	16mm
Ø 2.35mm	IM-MBT235-100	IM-MBT235-130	-
Ø 2.80mm	IM-MBT280-100	IM-MBT280-130	-
Ø 3.30mm	IM-MBT330-100	IM-MBT330-130	IM-MBT330-160
Ø 3.80mm	IM-MBT380-100	IM-MBT380-130	IM-MBT380-160
Ø 4.30mm	IM-MBT430-100	IM-MBT430-130	IM-MBT430-160



Maxi Z One-Piece Implant

Maxi Z One-Piece implant is ideal for when immediate loading is indicated, as the fixture design allows for all the different surgical scenarios, including immediate post-extraction placement as well as in healed bony sites.

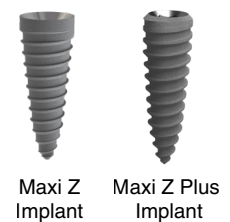
Implant	Length		
	11mm	13mm	15mm
Ø 3.30mm	IM-MAZP330-110	IM-MAZP330-130	IM-MAZP330-150
Ø 3.75mm	IM-MAZP375-110	IM-MAZP375-130	IM-MAZP375-150
Ø 4.50mm	IM-MAZP450-110	IM-MAZP450-130	IM-MAZP450-150
Ø 5.50mm	IM-MAZP550-110	IM-MAZP550-130	IM-MAZP550-150



Maxi Z & Maxi Z Plus Implants

Maxi Z & Maxi Z Plus is a tapered self-drilling, self-tapping two-piece implants that can be used in different bone qualities with high success rate. They can be placed flaplessly or after raising a flap with minimal surgical steps using one drill or sequential drilling.

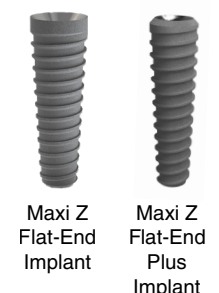
Maxi Z	Length			
	11mm	13mm	15mm	17mm
Ø 3.75mm	IM-MAXZ375-110	IM-MAXZ375-130	IM-MAXZ375-150	IM-MAXZ375-170
Ø 4.50mm	IM-MAXZ450-110	IM-MAXZ450-130	IM-MAXZ450-150	IM-MAXZ450-170
Ø 5.50mm	IM-MAXZ550-110	IM-MAXZ550-130	IM-MAXZ550-150	-
Maxi Z Plus	Length			
	11mm	13mm	15mm	17mm
Ø 3.75mm	IP-MAXZP375-110	IP-MAXZP375-130	IP-MAXZP375-150	IP-MAXZP375-170
Ø 4.50mm	IP-MAXZP450-110	IP-MAXZP450-130	IP-MAXZP450-150	IP-MAXZP450-170
Ø 5.50mm	IP-MAXZP550-110	IP-MAXZP550-130	IP-MAXZP550-150	-



Maxi Z Flat-End & Maxi Z Flat-End Plus Implants

The flat end & flat end Plus design provides a larger surface area and in the shorter lengths of 8mm & 10mm can be placed in jaws with vertical resorption. They are ideal for use in internal sinus lifting procedures eliminating perforation of the Schneiderian membrane.

Maxi Z Flat-End	Length					
	6.5mm	8mm	10mm	12mm	14mm	16mm
Ø 3.75mm	-	IM-MZFE375-080	IM-MZFE375-100	IM-MZFE375-120	IM-MZFE375-140	IM-MZFE375-160
Ø 4.50mm	IM-MZFE450-065	IM-MZFE450-080	IM-MZFE450-100	IM-MZFE450-120	IM-MZFE450-140	IM-MZFE450-160
Ø 5.50mm	IM-MZFE550-065	IM-MZFE550-080	IM-MZFE550-100	IM-MZFE550-120	IM-MZFE550-140	-
Maxi Z Flat-End Plus	Length					
	6.5mm	8mm	10mm	12mm	14mm	16mm
Ø 3.75mm	-	IP-MZFEP375-080	IP-MZFEP375-100	IP-MZFEP375-120	IP-MZFEP375-140	IP-MZFEP375-160
Ø 4.50mm	IP-MZFEP450-065	IP-MZFEP450-080	IP-MZFEP450-100	IP-MZFEP450-120	IP-MZFEP450-140	IP-MZFEP450-160
Ø 5.50mm	IP-MZFEP550-065	IP-MZFEP550-080	IP-MZFEP550-100	IP-MZFEP550-120	IP-MZFEP550-140	-



Classic Advanced Implant

Classic Advanced Implant is a straight two-piece implant with an internal hex connection. The 3.75mm & 4.50mm have a twin-start thread that provides faster implant insertion and higher initial stability.

Implant	Length				
	8mm	10mm	12mm	14mm	16mm
Ø 3.00mm	-	IM-CA300-010	IM-CA300-012	IM-CA300-014	IM-CA300-016
Ø 3.75mm	IM-2CA375-008	IM-2CA375-010	IM-2CA375-012	IM-2CA375-014	IM-2CA375-016
Ø 4.50mm	IM-2CA450-008	IM-2CA450-010	IM-2CA450-012	IM-2CA450-014	IM-2CA450-016



Classic Advanced Implant

Advanced Implant

Advanced Implant is a conventional design with the added features of a twin-start thread, micro-grooved flared (tapered) head. This fundamental design improves the surgical approach of immediate post-extraction implantation

Implant	Length				
	8mm	10mm	12mm	14mm	16mm
Ø 3.75mm	IM-A375-008	IM-A375-010	IM-A375-012	IM-A375-014	IM-A375-016
Ø 4.50mm	IM-A450-008	IM-A450-010	IM-A450-012	IM-A450-014	IM-A450-016



Advanced Implant

Implant Replica

Implant Replica is used to replicate the corresponding internal hexagon of the implant positioned in the mouth, enabling the implant fixture level to be accurately transferred by the technician to the master model. The replica is also available with a ball for use with OsteoCare ball type implants.

Implant Replicas	
Ø 3.00mm	CO-IRP-300
Ø 3.75mm	CO-IRP-375
Ø 4.50mm	CO-IRP-450
Ø 5.50mm	CO-IRP-550
Ø 1.90mm (Mini Ball)	CO-MIRP-190
Ø 2.40mm (Midi Ball)	CO-MIRP-240



Implant Replica

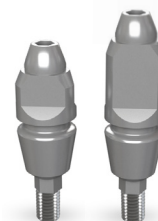


Implant Replica Ball-Type

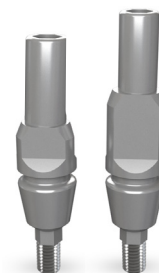
Impression Transfer

Impression Transfer is a two-piece component comprising of a retaining screw and impression sleeve designed for an implant-level impression using the open or closed tray indirect impression technique.

Impression Transfers Closed Tray	Diameter		
	Ø 3mm / Ø 3.75mm	Ø 4.50mm	Ø 5.00mm
Short	CO-ITC-3S	CO-ITC-4S	CO-ITC-5S
Long	CO-ITC-3L	CO-ITC-4L	CO-ITC-5L
Impression Transfers Open Tray	Diameter		
	Ø 3mm / Ø 3.75mm	Ø 4.50mm	Ø 5.00mm
Short	CO-ITO-3S	CO-ITO-4S	CO-ITO-5S
Long	CO-ITO-3L	CO-ITO-4L	CO-ITO-5L



Closed-Tray
Short Long



Open-Tray
Short Long

Healing Collar

Healing collar is used to block the internal hex thread of the implant during healing, preventing soft tissue or bone from growing into this area. It ensures a symmetrical moulding of the peri-implant mucosa due to a favourable attachment of the soft tissue to the machine polished surface.

Healing Collars	Diameter		
	Ø 3mm / Ø 3.75mm	Ø 4.50mm	Ø 5.00mm
Short	CO-HCS-375	CO-HCS-450	CO-HCS-500
Long	CO-HCL-375	CO-HCL-450	CO-HCL-500
Extra Long	-	-	CO-HCX-500



Healing Collar

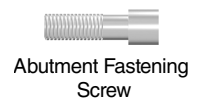
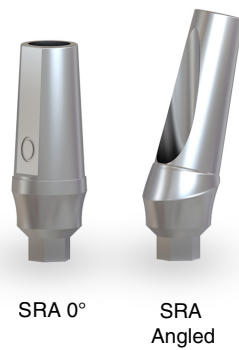
Screw Retained Abutment

Screw Retained Abutment is used to connect single or multi-unit restorations to the implant, such as fixed crowns or bridges.

Screw Retained Abutments*	Diameter		
	Ø 3mm / 3.75mm	4.50mm	5.10mm
0°	CO-SRA3-000	CO-SRA4-000	CO-SRA5-000
5°	CO-SRA3-005	CO-SRA4-005	CO-SRA5-005
10°	CO-SRA3-010	CO-SRA4-010	CO-SRA5-010
15°	CO-SRA3-015	CO-SRA4-015	CO-SRA5-015
20°	CO-SRA3-020	CO-SRA4-020	CO-SRA5-020
25°	CO-SRA3-025	CO-SRA4-025	CO-SRA5-025
30°	CO-SRA3-030	CO-SRA4-030	CO-SRA5-030
35°	CO-SRA3-035	CO-SRA4-035	-
40°	CO-SRA3-040	CO-SRA4-040	-
45°	CO-SRA3-045	CO-SRA4-045	-

*Includes Screw

Abutment Fastening Screw Short 1.5mm Hex	CO-AFS-01S
Abutment Fastening Screw Long 1.5mm Hex	CO-AFS-01L



One-Piece & Screw Retained Ball Abutment

The Ball Attachment is designed to retain an overdenture on implants placed at angles from 0° to 45°. The one-piece component is used to accommodate implant angulations from 0° to 15°. Each two-piece (SRBA) offers an angle range of plus or minus 5 degrees so that all angles are available from 15° to 45°.

One-Piece Ball Abutments	Diameter			
	Angle Range	Ø 3mm / Ø 3.75mm	Ø 4.50mm	Ø 5.00mm
0° Short	(0 - 15°)	CO-BA3OP-00S	CO-BA4OP-00S	CO-BA5OP-00S
0° Long	(0 - 15°)	CO-BA3OP-00L	CO-BA4OP-00L	CO-BA5OP-00L

Screw Retained Ball Abutments*	Diameter			
	Angle Range	Ø 3mm / Ø 3.75mm	Ø 4.50mm	Ø 5.00mm
20°	(15° - 25°)	CO-BA3O-020	CO-BA4O-020	-
30°	(25° - 35°)	CO-BA3O-030	CO-BA4O-030	-
40°	(35° - 45°)	CO-BA3O-040	CO-BA4O-040	-

*Includes Screw



Peek Temporary Abutment

Peek Temporary Abutment is used for temporary restoration.

Peek Temporary Abutments*	Diameter	
	Ø 3mm / Ø 3.75mm / Ø 4.50mm	Ø 5.00mm
0°	CO-TAP4-000	CO-TAP5-000
5°	CO-TAP4-005	CO-TAP5-005
10°	CO-TAP4-010	CO-TAP5-010
15°	CO-TAP4-015	CO-TAP5-015
20°	CO-TAP4-020	CO-TAP5-020
25°	CO-TAP4-025	CO-TAP5-025
30°	CO-TAP4-030	CO-TAP5-030
35°	CO-TAP4-035	-
40°	CO-TAP4-040	-
45°	CO-TAP4-045	-

*Includes Screw



Polycarbonate 'O' Ring Housing

Polycarbonate 'O' Ring Housing is available in two retentive options. The Black O-ring is used for normal cases where 4 or more implants are placed. The Red O-ring may be used where less than 4 implants are placed or special cases where extra retention is required.

Polycarbonate 'O' Ring Housing	
Black	CO-HMI-180
Red	CO-HMI-170
Rubber 'O' Ring Black (Pack of 4)	CO-RO4-200-Black
Rubber 'O' Ring Red (Pack of 4)	CO-RO4-200-Red



Direct Cast Abutment

Direct Cast Abutment (DCA) is used for the fabrication of custom made abutments and screw-retained restorations, using a wax-up and cast-on technique to facilitate the fabrication of screw-retained prostheses. The DCA is also available with a gold interface for precise implant abutment connection. The DCA is made of Delrin, which is a plastic that will burn out whilst leaving no residue within the matrix. It can be cut to the exact length and wax added to the required dimension, whether it is for a Crown, Bridge or Overdenture.

Direct Cast Abutments*	With Hex	Round	Gold Interface (Hex)	Gold Interface (Round)
Ø 3mm / Ø 3.75mm	CO-DCA-375	CO-BCA-375	CO-DCG-375	CO-BCG-375
Ø 4.50mm	CO-DCA-450	CO-BCA-450	CO-DCG-450	CO-BCG-450
Ø 5.00mm	CO-DCA-500	CO-BCA-500	-	-

*Includes Screw



Direct Cast Abutments

Equator Overdenture System

Equators Kits	Height	
	3mm	5mm
Equator Maxi Z Ø 3.75	OC130MZ33	OC130MZ35
Equator Maxi Z Ø 4.5 & Ø 5.5	OC130MZ43	OC130MZ45
Smartbox Kit	OC335SBC	
Equator Tools		
Cap Insertion Tool	OC0851AC	
Equator Screwing Key	OC774CHE	
Equator Cap Extractor	OC091EC	
Replacement Equator Cap Kit	OC192ECE	
Impression Transfers x 2	OC044CAIN	
Laboratory		
Laboratory Cap Kit - 4 Caps	OC140CEV	
Laboratory Analogue x 2	OC144AE	



Equator Screwing Key



Laboratory Analogue



Dynamic Ti-Base ®

Diameter	Engaging	Non-Engaging
Ø 3.75mm	CO-TIBE-375	CO-TIBN-375
Ø 4.50mm	CO-TIBE-450	CO-TIBN-450
Ø 5.50mm	CO-TIBE-550	CO-TIBN-550

The Dynamic Ti-base ® is designed to work with the 3.0 Dynamic Abutment system screwdriver and allows for correction of screw entry from 0° to 45°.



Dynamic Ti-Base ®

Scan Body

Diameter		
Ø 3.75mm	Ø4.50mm	Ø5.50
CO-SBP-375	CO-SBP-450	CO-SBP-550



Scan Body

Digital Analog

Diameter		
Ø 3.75mm	Ø4.50mm	Ø5.50
CO-DIRP-375	CO-DIRP-450	CO-DIRP-550



Digital Analog

Dynamic Screwdriver

Length
24mm (up to 30° angulation)

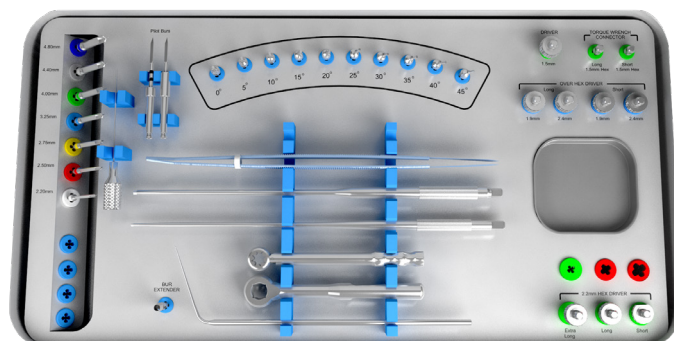


Dynamic Screwdriver

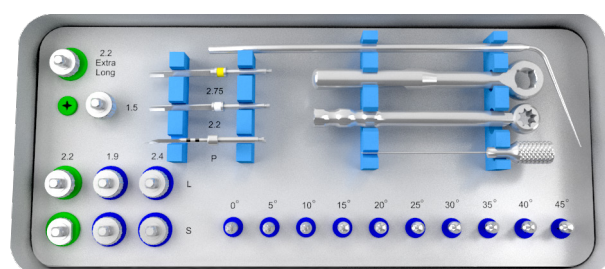
Surgical Kits

OsteoCare kits enable a broad range of treatment procedures to be performed using the minimum number of ergonomically designed instruments. With organised layouts, and clearly labelled instruments for easy return to the tray after use. All boxes and contents are manufactured from materials that accept sterilisation and autoclaving.

Surgical Kits	
Universal Surgical Kit	IN-USK-001
Surgical Kit	IN-MSK-002
Accessories	
Torque Wrench 30Ncm	IN-TRW-001
Torque Wrench Connector Short	IN-TRC-01S
Torque Wrench Connector Long	IN-TRC-01L
Osteotomy Probe	IN-OSP-001
Titanium Tweezers	IN-TTW-001
Ratchet	IN-RAT-220
Abutment Preparation handle	IN-APH-001
Centre Finder	IN-CTF-001
Titanium Guide Tube	CO-TGT-001
Radio Graphic Balls (pack 5)	IN-RGB-050
Bur Cleaner	IN-BRC-001
Bur Extender	IN-BRE-001
Mini/Midi Stent	RS-MMI-02
Maxi Z One & Two-Piece Stent	RS-MZI-02
Maxi Z Two-Piece & Flat-End Stent	RS-MZF-01
Advanced Stent	RS-AI
Classic Advanced Stent	RS-CAI



Universal Surgical Kit

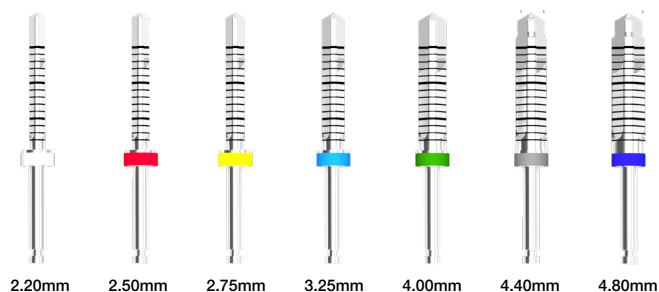


Surgical Kit

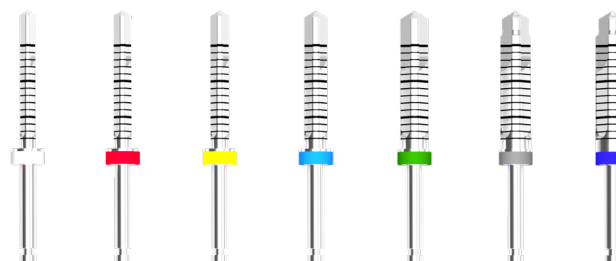
Osteotomy Burs

Used to drill osteotomy site in preparation for implant placement.

Universal Burs - Titanium - Internal Irrigation	
2.20mm	IN-UBR-220
2.50mm	IN-UBR-250
2.75mm	IN-UBR-275
3.25mm	IN-UBR-325
4.00mm	IN-UBR-400
4.40mm	IN-UBR-440
4.80mm	IN-UBR-480
Drill Set	IN-UBR-KIT-001



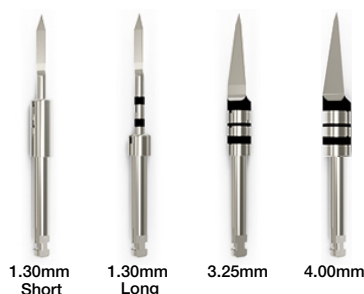
Universal Burs - Stainless Steel - External Irrigation	
2.20mm	IN-STS-220
2.50mm	IN-STS-250
2.75mm	IN-STS-275
3.25mm	IN-STS-325
4.00mm	IN-STS-400
4.40mm	IN-STS-440
4.80mm	IN-STS-480
Drill Set	IN-STS-KIT-001



Ultra Drills

Three sided drill for better stability..

Ultra Drills	
Ultra Pilot 1.30mm Short	IN-PBR-130S
Ultra Pilot 1.30mm Long	IN-PBR-130L
Ultra Profile 3.25mm	IN-PBR-325
Ultra Profile 4.00mm	IN-PBR-400



Long Handled Hex Drivers

1.5mm Hex Long Handled Driver is used to tighten screw retained components and healing collars.
2.2mm Hex Long Handled Driver is used for placement of OsteoCare two-piece implants.

Long Handled Hex Drivers	
1.5mm	IN-LHD-150
2.2mm	IN-LHD-220



Ratchet Connected Drivers

Used to place the full range of implants. 1.5mm driver is used for prosthetic components.

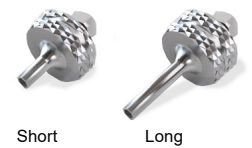
Ratchet Connected Drivers	Short	Long	Extra Long
1.5mm	-	IN-RCD-150	
2.2mm	IN-RCDS-220	IN-RCD-220	IN-RCDL-220



Ratchet Connected Over Hex Drivers

Used to place the full range of implants and one-piece ball attachments.

Over Hex Driver	Short	Long
1.9mm	IN-OHDS-190	IN-OHD-190
2.4mm	IN-OHDS-240	IN-OHD-240



Ratchet Connected Ball Driver

Allows for correction of up to 20° which will convert a lot of cases from cement retained to screw retained.

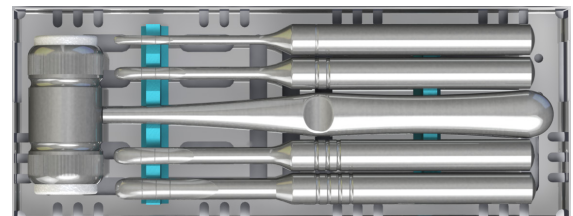
Hex Ball Driver	
1.5mm	IN-RCBD-150



Ridge Expanders

Ridge expanders may be used in conjunction with socket formers and osteotomy burs if simultaneous placement of implants is undertaken, they can also be used for separation of the cortical plates for inter-positional grafting.

Ridge Expanders	
Boxed Set	IN-RES-SET (without Mallet)
Size 1	IN-RDE-001
Size 2	IN-RDE-002
Size 3	IN-RDE-003
Size 4	IN-RDE-004
Surgical Mallet	IN-SMA-001



Socket Formers

Used as an alternative to or in conjunction with osteotomy burs to prepare Implant site in the maxilla.

Socket Formers – Pointed	
6 Boxed Set	IN-ISF-SET
Site Marker	IN-ISF-SM1
Pilot	IN-ISF-PSF
3.00mm	IN-ISF-300
3.75mm	IN-ISF-375
4.50mm	IN-ISF-450
5.50mm	IN-ISF-550

Socket Formers – Flat-End (Internal Sinus Lifting)	
6 Boxed Set	IN-ISF-SET-FE
Site Marker	IN-ISF-SM1
Pilot	IN-ISF-PSF
3.00mm	IN-ISFE-300
3.75mm	IN-ISFE-375
4.50mm	IN-ISFE-450
5.50mm	IN-ISFE-550



To Order:

OsteoCare Implant System
5-7 Colndale Road, Poyle Ind. Estate, Colnbrook,
Slough, Berkshire SL3 0HQ,
United Kingdom.

Tel: +44(0)1753 770006
Fax: +44(0)1753 770005
Freephone: 0800 281981
E-mail: info@osteocare.uk.com
Website: www.osteocare.uk.com

© 2023 OsteoCare Implant System
All Rights Reserved

NB: OsteoCare reserves all rights to change, modify and improve specifications of, or discontinue products at any time.

OsteoCare strongly recommends that all users of its system should acquire specialist training before undertaking any of the clinical procedures. OsteoCare provides training appropriate for various levels of knowledge. For more information please contact OsteoCare.

Some products may not be available in all markets.